



Inside Out Dorset

Hengistbury Headlines 2016 – Artists' Commission Brief

Please ask us for this information in alternative formats



About Inside Out Dorset

Since 2005 the Inside Out Dorset festival has presented high quality, large-scale, outdoor arts events to more than 100,000 people. Inside Out Dorset brings together incredible artistic work and combines it with beautiful, inspiring Dorset locations. It is a wholly managed project of Activate Performing Arts and is guided by an advisory group of Dorset arts promoters and learning organisations, founded by Dorset Theatre Promoters Consortium in 2001. It is core funded by Arts Council England as part of Activate being a National Portfolio Organisation. The co-Artistic Directors are Kate Wood and Bill Gee.

Most events are free or very subsidised. We aim to reach a wide demographic audience across the festival, and have an associated programme for schools and communities that will take place before and after to increase the level of engagement of local people and widen our audience base.

Hengistbury Headlines

The Hengistbury Headlines installation and performance trail – on the spectacular landscape of Hengistbury Head in Bournemouth - is a key part of the Inside Out Dorset Festival in 2016. The trail will present work by up to 9 artists and companies, supported by Jerwood Charitable Foundation, Dorset Arts Trust, The Arts Development Company, Pavilion Dance South West, RSPB and Arts Council England. Artists selected will be supported across a year of development. The project aims to

engage audiences with the natural and cultural heritage and special environment of the Headland and the global issue of climate change, part of the wider Dorset Arts Trust art programme¹.

About Hengistbury Head

See image on page 1 and Appendix A.

Hengistbury Head is a special place. The wildlife, geology and archaeology are outstanding and have national and international recognition. The site is designated as a Site of Special Scientific Interest (SSSI) and is a Scheduled Ancient Monument (SAM). Situated at the eastern-most point of the Borough of Bournemouth, Hengistbury Head covers an area of about 160 hectares and offers an impressive recreational and environmental resource for residents, the casual visitor, students, naturalists and scientists. It is one of the most popular sites on the south coast of England with around 1 million visitors annually. The unique landscape is a haven for both people and wildlife in an otherwise predominantly urban setting with spectacular views of the Isle of Wight, Purbeck, Cranborne Chase and the New Forest. The site – almost completely surrounded by water, is a striking location to consider the impacts of climate change. The site includes beaches, heathland, woodland, hills and bird reserves.

Project Overview

As part of Inside Out Dorset 2016, we are inviting proposals for the commission of interpretive, site specific or site responsive temporary installation artworks and performances in the area of Hengistbury Head.

Following the successful pilot of a similar model 'Ridgeway Responses' as part of the South Dorset Ridgeway Landscape Partnership (SDRLP), we were able to commission 9 artists and companies who we had not presented in the festival before. Collectively the artworks formed a large scale event over 6 miles visited by 3,400 people over 3 days in September 2014 as part of the Inside Out Dorset festival 2014.

Local communities will be able to inform the development of some of the commissions and this process will start at the time of the residency in January 2106. Activate, as part of its Inside Out Dorset programme, will be working with local schools and other community groups during 2016. We expect that work to lead to greater engagement between the artists' work, local communities and the festival pieces in September 2016.

These events will take place from the 22nd – 25th September 2016. These commissioned projects will form a trail for audiences who, we anticipate, will visit up to nine pieces in various locations across an approximately two mile distance over a typical one or two day visit to the area. The coordination of audience and audience experience will be led by Inside Out Dorset.

We are expecting an audience in the region of 6,000 over the duration of this event. Our audiences will include groups of friends, extended families, young people and children, both regular and non-regular arts attenders. Based on previous festivals they will be drawn from the very local to the international.

Core event times will be from 12-4pm Thursday 22nd – Friday 23rd, and 12-6pm Saturday 24th – Sunday 25th September 2016, although permanently sited installations inevitably will be experienced

¹ The wider Dorset Arts Trust Art of Climate Change Programme aims to: i) build up a sense of discussion in the county about our changing climates and their associated factors; ii) help people to see how they can change behaviour to mitigate climate change; iii) encourage people to take action and iv) help influence Councillors and policy makers.

outside of these times.

Artists will be supported on a programme of development including a residency on the Headland on the 23rd and 24th January 2016 – which all commissioned artists will be asked to attend. See below 'Commission - Support for Artists' section for more details.

The Commissioned Work

The commissions are for ideas that reference or respond to the themes set out below and a particular site or type of site (e.g. woodland, footpath, hill, beach) within the identified area at Hengistbury Head. In addition to the Headland itself, we are also open to proposals that respond to the surrounding landscape visible (Christchurch harbour, Bournemouth and more distant vistas), as well as crossings and access points via land or sea onto the Headland, such as Mudeford Quay to Mudeford Sandbank, and Christchurch to Mudeford Sandbank.

We plan to support one dance-led piece co-commissioned with our partner - Pavilion Dance South West. We also plan to support one piece responding to the birds and themes of migration on the Headland co-funded with our partner the RSPB.

Overall we will present work that references or responds to:

- the locality of Hengistbury Head as described above;
- the global issue of Climate Change – directly or indirectly;
- the weather, wildlife, landscape or environment of Hengistbury Head;
- the heritage, people and stories of Hengistbury Head.

Commissions will be offered in response to proposals for works for up to £5,000.00

More commissions will be selected for art work proposals in the mid-range of this budget (between £2,000.00 - £3,000.00). See below – Budget Guidance.

The proposals will be open for new works or interpretations/representations of existing works. It is hoped that some of the commissions will also demonstrate potential for touring and responding to other locations – however this is not a criteria.

Pieces are expected to be small-scale, however this can vary from pieces for a hundred people at a time, to an intimate small scale experience. All pieces will need to be viewable during the hours of daylight.

It is anticipated that some pieces will be viewable throughout the entire four day period. Others, particularly performative work, will take place at particular times within the period.

Climate Change

We want to raise awareness of climate change because it is an urgent global issue. We think that outdoor arts, presented in extraordinary landscapes has the potential to activate new dialogues about this. We are looking for audiences to be gently provoked and encouraged to engage in the issue, in the rich context of the specially protected landscape of Hengistbury Head. We also plan to hold one or more discussion events with appropriate speakers on this subject for the public.

Production

We will consider some works that due to their delicate nature or sensitive valuable equipment, to be demounted and re mounted each day. Due to the rural nature of the environment and the distance between artworks, the ability to provide extensive technical support will be limited. In general,

artists should be as self-sufficient as possible, although there will be production and producing expertise available through the project as mentioned on Page 1.

All pieces must consider the potential weather conditions and exposed location of sites. Hengistbury Head is a very windy in exposed areas. This does not require pieces to be completely weatherproof, but the degree of tolerance to wind and rain will necessarily inform the choice of work.

Information Day

We will be hosting an Artists Information Day on Saturday 7th November 2015 at Hengistbury Visitor Centre to provide more information and lead walks around the site. No separate fee payments will be made for attending this. We recommend if possible artists applying attending this, and/or make a separate site visit to Hengistbury Head, before a commission proposal is made.

However, we have identified a number of potential locations and can give examples. Please see Appendix A for images and details on these possible sites.

The Selection Process and Requirements

The commission proposals will be considered in terms of:

- The strength and quality of the artistic ideas
- The contribution to the interpretation of the particular landscape, heritage, wildlife and environment of Hengistbury Head as well as the issue of climate change
- The composition of the programme as a whole and the audience experience including access
- The financial and logistical requirements of pieces

Proposals must be feasible, and will be expected to be fully realisable and achievable within the production period and commission budget.

All plans must address the practical issues of installing and presenting pieces outside over period of up to three days preparation in September 2014.

Budget Guidance

We would like all applications to include a budget.

The budget provided in the Proposal must include:

- Artists fees for time spent making the work, including attendance at January residency
- Materials
- Technical costs of equipment to make and present the work
- Accommodation, travel and expenses for developing the idea – i.e. site visits

Note - Activate will cover the cost of travel, accommodation, food and drink for the final installation/set up and festival event itself and the January residency. Resources are limited and will need to be agreed together. See 'Support for Commissioned Artists' and 'we will provide' for more info.

The production or making process will take place in the artists' own facilities or spaces, with development time on site when required.

A separate budget is available for artists' and audience access requirements.

The completed piece will need to be installed/ready in time for rehearsals taking place on Wednesday 21st September 2016, with any technical support agreed.

Note: 24 hr Site Security is prohibitively expensive and so it is not envisaged that we will be able to afford this to cover installations. However, the more remote nature of the location means that issues with vandalism are less likely and we will discuss in detail with artists how their work can best be made safe.

Please note budgets should be inclusive of VAT.

Artists can seek to extend the reach of their project and secure other funds, as long as this doesn't mean the project is dependent upon this other support being achieved.

Commission Process and Timescale

October 2015	Promotion of opportunity
7 th November	Artists' Information Day
23 rd November 2016, 5pm	Deadline for proposals
End November	Shortlisting of artists
Start of December 2016	Selection and notification of successful commissions
23 rd – 24 th January 2016	Residency at Hengistbury Head
January – July 2016	Creative, technical, marketing and other meetings as required
21 st September 2015	Completed commissions installed for rehearsals
22 – 25 th September 2016	Hengistbury Headlines takes place as part of Inside Out Dorset 2016

Support for Commissioned Artists

At the residency artists will be able to meet experts and partners who are familiar with the area, go on site walks, explore and enjoy shared meals with the Festival team and our partners and experts. We will invite our partners such as archaeologists, historians, wildlife and environment specialists and volunteers with knowledge on the area to take part, give presentations and share their knowledge. We will also offer focussed one to one sessions with the Artistic Directors and Festival Producer.

Throughout the year, the Festival Producer and Production Manager will support artists where needed in developing their work, to help identify sites and support practical development of the work, as well as during and after the festival itself. We will also offer the opportunity for developing artists to access mentoring support from an experienced site specific artist or production advisor throughout the year.

We will provide:

- Advisory and technical support for artists and the commissioned pieces
- Commission programme administration including budget payments and monitoring
- Producer role for the artistic and event management
- Marketing and Media Communications
- Permissions for the use of the sites
- Technical support and practical advice
- Health & Safety Management expertise
- Assistance towards travel costs for the installation period
- Assistance towards local accommodation if required, for the installation and exhibition period
- Limited production and Technical support staff for the installation and exhibition period
- Stewarding of pieces and performances

- Advice on materials and equipment for the installation of the pieces.
- Launch Event and VIP Preview
- Audience and Public Management throughout the programme

Who can make a proposal?

- Individual artists, creative people and designers
- Arts organisations and creative companies
- Artists may collaborate with others on the development of ideas (other artists, makers, community participants, engineers, technical experts - for example),

We will try to meet the access requirements of any applicant on request.

Application Process

Proposals are invited, to include a description of why you are suitable, how you propose to deliver the work including a budget, requested commission fee, plus CV and three referees.

We are happy to accept applications in other formats such as video if a written application is difficult/ not possible – e.g. from deaf or disabled artists or people with dyslexia.

A specific budget is available to support access requirements and we encourage proposals from deaf and disabled artists.

Proposals should be emailed to

Samantha Gillingham, Projects and Promotions Assistant: samantha@activateperformingarts.org.uk based at Activate Performing Arts, Little Keep, 7-9 Barrack Road, Dorchester, Dorset, DT1 1SQ

DEADLINE: Monday 23rd November at 5pm

Artists are welcome to contact Activate's Inside Out Dorset Festival Producer, Jen Walke-Myles for an informal discussion before applying: jen@activateperformingarts.org.uk or 01305 260954.

Management

The work will be curated by our Co-Artistic Directors Kate Wood and Bill Gee.

Activate produces, promotes and develops the performing arts in Dorset with the belief that artists can affect and/or provide positive change in our communities. Our vision is to be a National leader in presenting land based outdoor arts and make extraordinary performance and high quality arts events happen across the Region. We work with venues, programmers, the education sector, artists, social services, environment, economic development, among others who all play a part in the ecology, sharing and delivering our aspirations with us. We are committed to innovation and creativity; life-long learning; access; equal opportunities; quality and diversity.

Activate is core funded by Arts Council England, Dorset County Council and Borough of Poole. Hengistbury Headlines is supported by Jerwood Charitable Foundation, Bournemouth Borough Council, Pavilion Dance South West and the RSPB.

Project supported by:

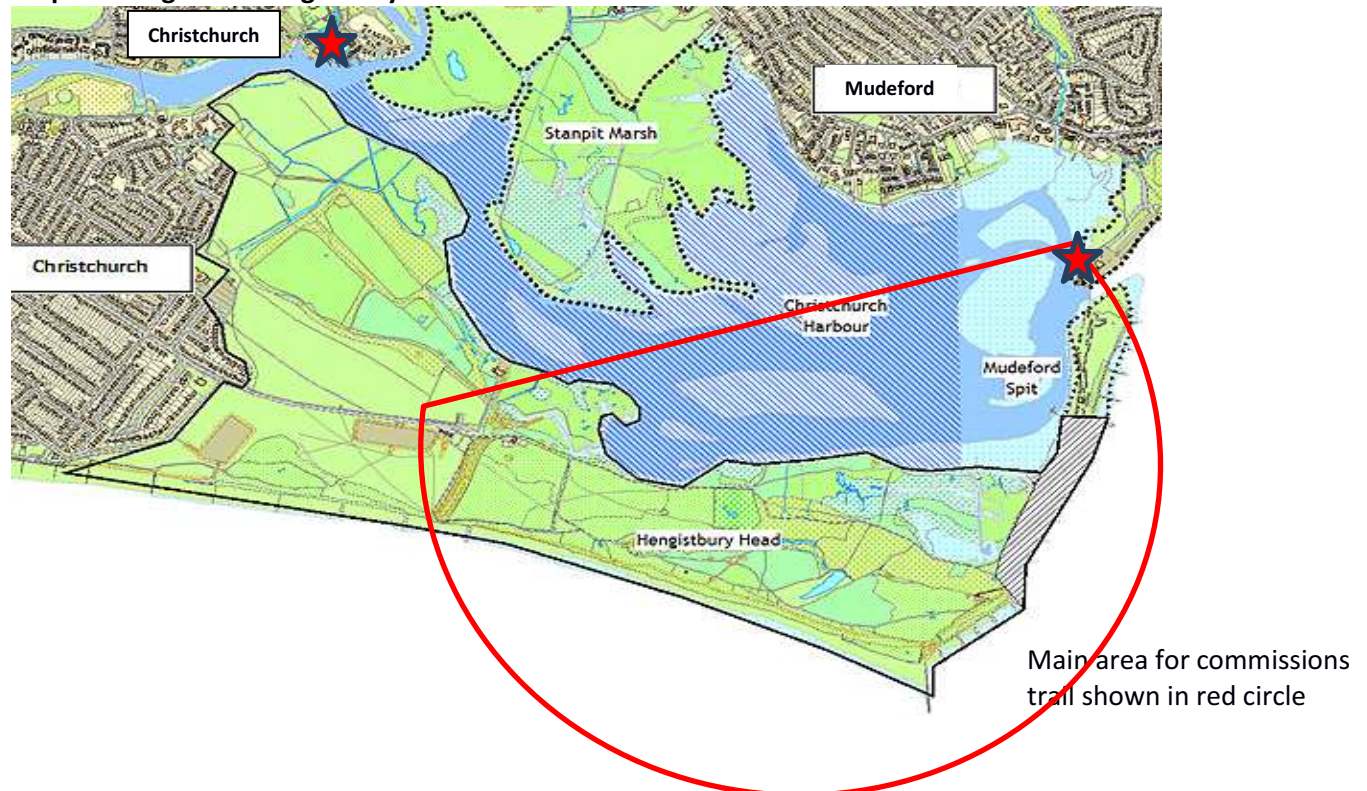


Appendix A – Hengistbury Head Trail Area

Access onto Hengistbury Head is via road through the residential area in Christchurch, or on the passenger ferry from Christchurch / Mudeford Quay, which traverses the Christchurch harbour.

As you enter the headland by road, large flat grasslands guide you to the main entry point situated by the historic 'double dykes' at the car park/Visitor Centre Area. The main focus area of Hengistbury for the trail continues from the Double Dykes eastward all the way to the peninsula, a glorious sandy spit of land with stunning beach huts looking out both east and west. En route to the peninsula, a variety of paths can be taken – taking in sheltered woodland, protected ponds such as the Quarry Pond and Lily Pond, exposed heathlands, an abandoned Coastguard Hut and ancient burial mounds. Below the high points to the South the beach stretches all the way back to Bournemouth. A huge variety of significant species are prevalent on the headland, which is a major site for migratory birds. Sky larks, wading birds, egrets and herons, grazing cattle, natter jack toads, damselflies, azure blue butterflies and sand dart moths signify the importance of the site for nature as described on page 2. From many locations spectacular views to the Isle of Wight, Christchurch, Bournemouth, Poole and the Purbecks, across the water which surrounds the headland.

Map showing Main Hengistbury Head Focus Area



The commissions are for ideas that reference or respond to the themes set out below and a particular site or type of site (e.g. woodland, footpath, hill, beach) within the identified area at Hengistbury Head.

In addition to the Headland itself, we are also open to proposals that respond to the surrounding landscape visible (Christchurch harbour, Bournemouth and more distant vistas), as well as crossings and access points via land or sea onto the Headland, such as Mudeford Quay to Mudeford Sandbank, and Christchurch to Mudeford Sandbank.

★ Red stars show Christchurch and Mudeford crossing points.

Map showing Ferry Links from Hengistbury Head (Mudford Sandbank) to Mudford Quay/Christchurch



There are two ferry routes to Hengistbury Head. The Vintage Ferry Service starts from Tuckton Tea Gardens, calling at Wick Ferry, Christchurch Quay and Mudford Sandbank. The Mudford Ferry runs from Mudford Quay to the beach on Mudford Sandbank.



The path along the top of the Headland follows the red dotted line, which runs from Barn Field to the viewpoint east of Quarry Pond.

The main route marked with a black dotted line and with a cyclist symbol is fully accessible. There is an accessible link from this route to the pathway on top of the Headland - this is the path from just west of Holloway's Dock running south to Quarry Pond. The top path is accessible between the two viewpoints as shown on the map above. The path around Barn Field is also accessible and the Natterjack Ponds (not shown) just before the steps to the south of Long Field can be accessed from here.

There is a small land train that runs from the cafe/car park to the beach huts at the spit and harbour entrance. It runs every day except Christmas day.

For a birds-eye-video made by Next Level Aerials of Hengistbury Head at sunset:

<https://www.youtube.com/watch?v=A91JtVX7ZS0>

Site images of Hengistbury Head – see part 2.